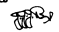
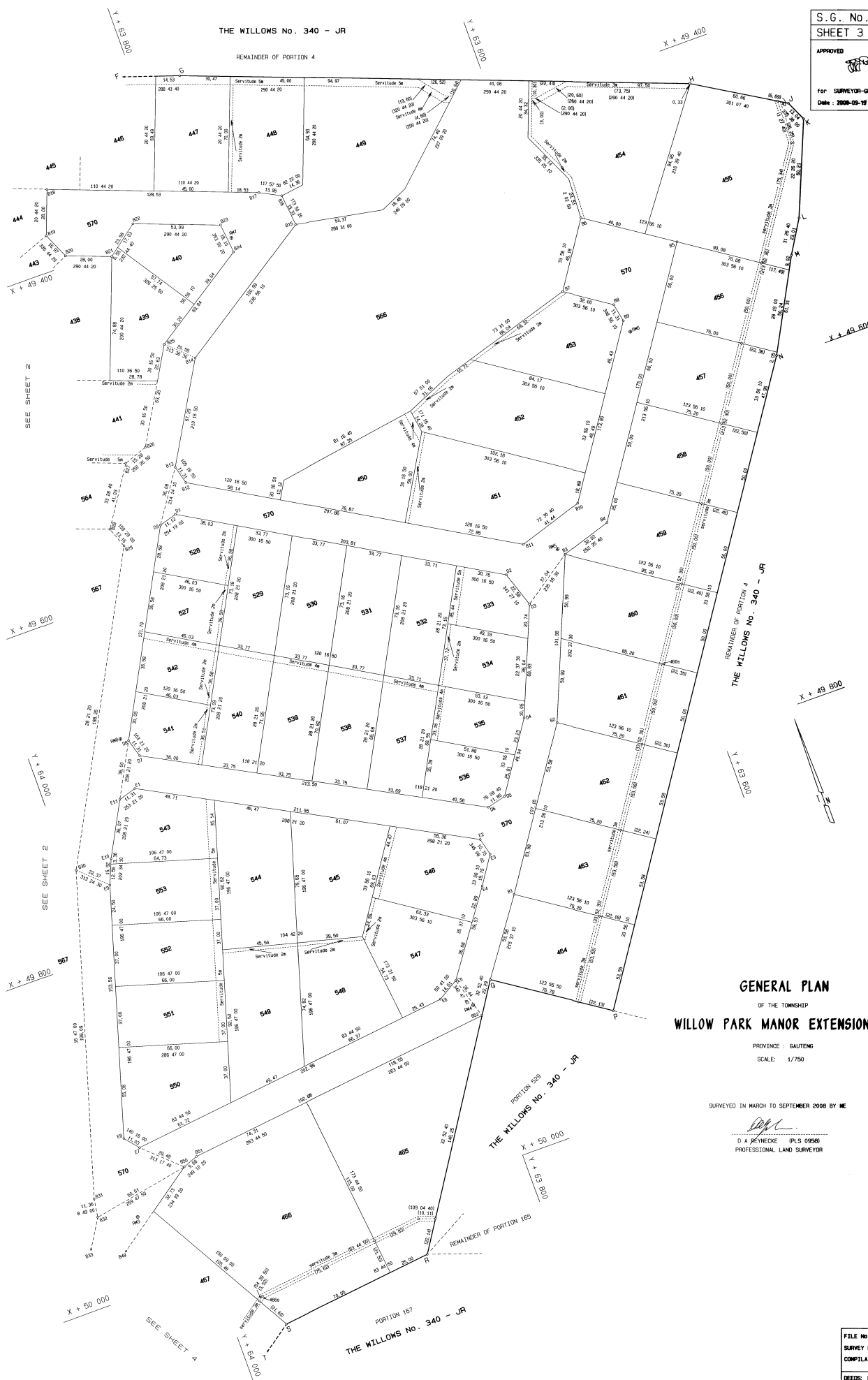



REMAINDER OF PORTION 4

S.G. No. 6104/2008
 SHEET 3 OF 4 SHEETS
 APPROVED

 for SURVEYOR-GENERAL
 Date: 2008-09-19



GENERAL PLAN
 OF THE TOWNSHIP
WILLOW PARK MANOR EXTENSION 65

PROVINCE: GAUTENG
 SCALE: 1/750

SURVEYED IN MARCH TO SEPTEMBER 2008 BY ME

 D A PREYNECKE (PLS 0956)
 PROFESSIONAL LAND SURVEYOR

FILE No. 75P
 SURVEY RECORDS No 2796/2008
 COMPILATION NUMBER: 426422/24
 DEEDS: PRETORIA